

MACHINERY & PROPULSION

- 550HP Iveco Aifo 8281SRN50 diesel engine driving thrusters & ancillary equipment
- 15KW Iveco Aifo 414M-48 diesel generator
- Four (4) thruster for surge & yaw motions
- Two (2) lateral thruster for sway motions

CONTROL CABIN ELECTRONIC EQUIPMENT

- Ten (10) TFT Industrial Video Monitors
- One (1) Joystick Panel
- Two (2) UPS Units
- One (1) Computer Cabinet
- Two (2) Video Recording Units
- WiFi communication system for portable control of barge movement
- WiFi communication for data/video streaming to main/support vessels
- Certified by ABS with requirements according to the DNV 'Standards of Offshore Service Module 2.7-2'

NAVIGATIONAL SYSTEMS

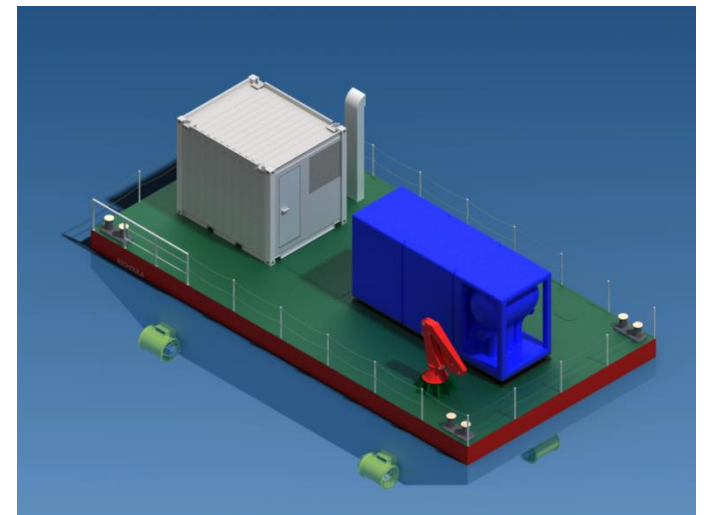
- One (1) Differential GPS Trimble AgGPS 132
- One (1) Fluxgate compass KVH-1000
- Integrated Navigation Software-Navipac EIVA
- SCADA incorporating all relevant information
- Auto-Heading function
- Trim Surge/Sway functions

RADIO COMMUNICATION

- One (1) ICOM IC-M411 VHF

AUXILIARY EQUIPMENT

- One (1) Hydraulic Crane
- One (1) Hydraulic Winch



SUPPORT BARGE

F/B Richouula is a new support barge constructed in 2013 by Assodivers Ltd. to provide all the necessary support of the AssoTrencher, AssoJet and AssoPlow underwater machines.

This barge accommodates all the necessary equipment and machinery that is required for the correct operation of the underwater vehicles:

- Diesel engine;
- Pump units;
- Diesel generator

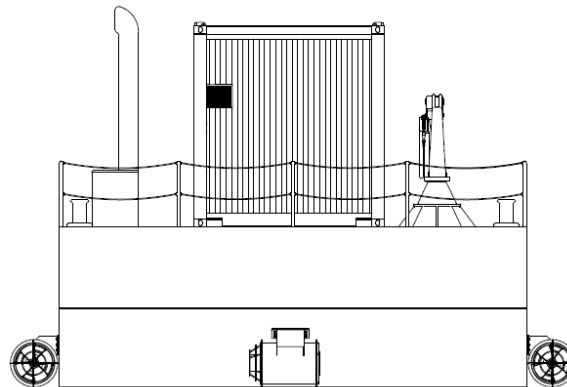
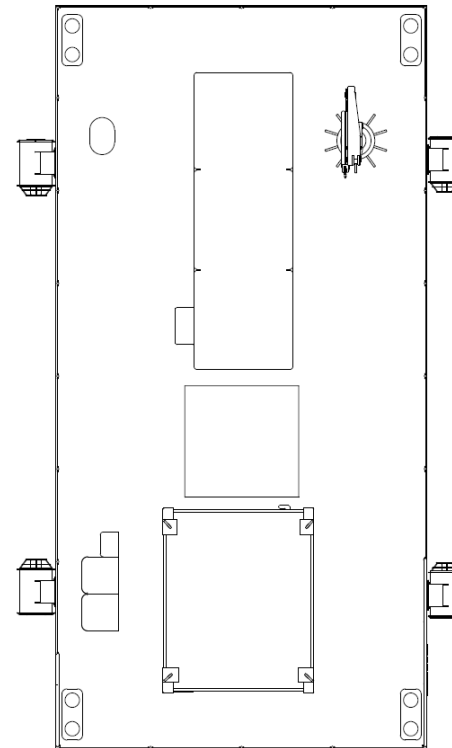
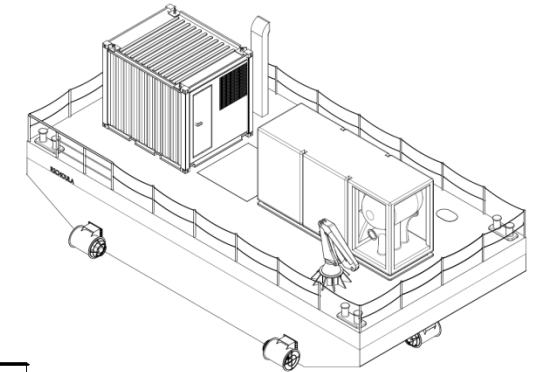
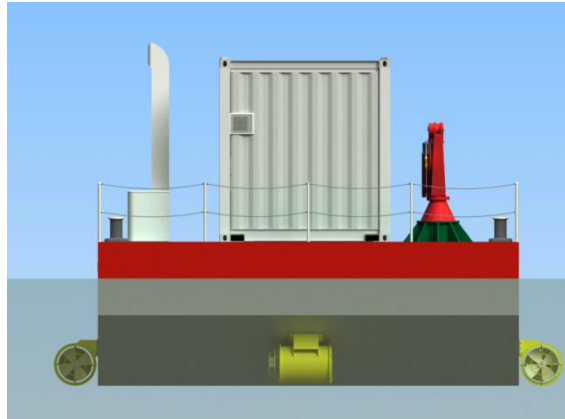
On the open deck the vessel accommodates:

- An autonomous portable control cabin
- A portable water pump powered by a diesel engine

This barge is controlled both wired and wireless with independent controls in order to assist during shallow water operations. The combination of six thrusters with the incorporated semi-dynamic-position capabilities the barge has the ability to remain in position in close proximity to the underwater vehicle according to user needs.

SPECIFICATIONS

Length: 12.0 m
Breadth: 6.0 m
Draught: 2.0 m



The specification details are illustrative for marketing purposes only. Actual equipment may be different as a result of product improvement or other reasons. Specific interface and performance information should be reconfirmed at time of order placement. Specifications are subject to change without any prior notification.

Memberships & Accreditations



Assodivers Ltd

69 Okeanidon str. & 38
Charilaou Trikoupi str.
Elefsina, GR 19200,
Greece

Tel: (+30) 210 4527050
Fax: (+30) 210 4527053

central@assodivers.gr

www.assodivers.gr